



## PAC 1300/1400 OWNER'S MANUAL



**ALWAYS WEAR A COAST GUARD APPROVED FLOTATION DEVICE  
WHEN OPERATING THE PAC 1300/1400.**

**Know the limits of your abilities and the limits of your equipment.**

**Changes in air temperature and elevation may cause the air inside the PAC 1300/1400 to expand which could cause a tube to burst. Always release some air when these conditions occur.**

**Never leave your boat sitting in direct sunlight when it is out of the water.**

**This owner's manual will help you with initial set-up of your new PAC 1300/1400, provide basic maintenance tips, and covers simple field repair.**



BEFORE YOU BEGIN,  
Check for damaged or missing parts.



1 - PAC 1300/ or 1400 raft collar



1 - PAC 1300 or 1400 raft floor



2 - Seat bottoms with swivels  
1 - Regular seat bottom



3 - Seat backs



2 - Oar mounts



2 - Oar locks



2 - Side rails



3 - Cross bars



1 - Foot bar



1 - Bow raised seat bar



1 - Stern raised seat bar



2 - Stern seat bars



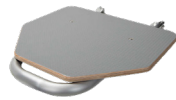
2 - Bow platform hanger bars



2 - Stern platform hanger bars



3 - Seat mounts



1 - Bow casting platform



1 - Stern casting platform



2 - Thigh hook



1 - Bow thigh hook bar



1 - Stern thigh hook bar



1 - NRS 1/2" ratchet wrench



4 - 3' Cam straps  
2 - 4' Cam straps  
2 - 6' Cam straps

## Anchor System



1 - Anchor control system  
with rope jam cleat



1 - Intermediate pulley



1 - Anchor mast



1 - U-Bolt with nuts  
and washers



1 - Oversized U-Bolt  
with nuts and  
washers



1 - 2.5" Bolt with  
nut and washers

## Hardware



34 - U-Bolt  
68 - Washers  
68 - Nylock Nuts



8 - Carriage bolts



4 - Hex bolts



8 - Large washers



4 - 1/4" washers



4 - Locking washers



8 - 1/4" Nylock nuts

## Items Needed For Assembly (Not Included):



Standard screwdriver



1 - 6mm wrench or socket  
1 - 1/4" wrench or socket



2 - Scrap pieces of cardboard



1 - Butane torch / lighter



1 - Soapy water



3 - Long cam straps



Inflation pump

## Repair Kit

2 - Lacing rope

1 - Roll of fabric with PVC, AIREcell material, and floor AIREcell material.

2 - Alcohol prep. pads

1 - Piece of sand-paper

1 - Vinyl tube valve adapter

1 - Leaffield valve adapter

1 - Leaffield valve wrench

1 - Repair needle and thread

1 - 5/32" hex key

2 - Replacement split rings

3 - Type A Tear-Aid patches

1 - Type A Tear-Aid roll

1 - #8 zipper car

4 - heat shrink tubing.

## Step 1: Soft Pressure Inflation

### Items needed:



1 - PAC 1300 or 1400 raft collar



1 - PAC 1300 or 1400 raft floor



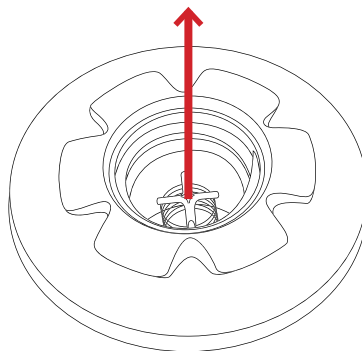
Inflation pump



1 - Leaffield valve adapter



1 - Vinyl tube valve adapter



To prepare to lace in the floor, inflate the raft collar and floor to soft pressure using a hand, foot or electric pump designed for inflatable boats. **DO NOT INFLATE TO OPERATING PRESSURE AT THIS TIME.**

1. Remove the dust caps from the valves.
2. Push and turn the valve stems a 1/4 turn. This positions the valve stems in the up or *closed* position. Having the valve stems in the *closed* position allows air enter the chambers, but won't allow air to escape.
3. Inflation sequence is in a cross pattern. This helps keep the AIREcell in their proper place.
4. Start with an electric pump if you have one or use a hand pump.
5. Connect the vinyl tube adapter to the pump hose and connect the Leaffield valve adapter to the vinyl tube valve adapter.
6. Screw the Leaffield valve adapter into the valve.
7. Inflate the raft chambers and floor to soft pressure, just enough to hold shape.
8. Close the valve caps finger tight.



Changes in air temperature and elevation could cause the air inside the PAC 1300 or 1400 to expand which could cause damage to the AIREcells. Never leave your fully inflated tube sitting in direct sun light out of the water. **Always release some air when these conditions occur.**

## Step 2: Raft Floor Installation

### Items needed:



1 - PAC 1300 or 1400 raft collar



1 - PAC 1300 or 1400 raft floor



3 - Long cam straps



2 - Lacing ropes



2 - Scrap pieces of cardboard

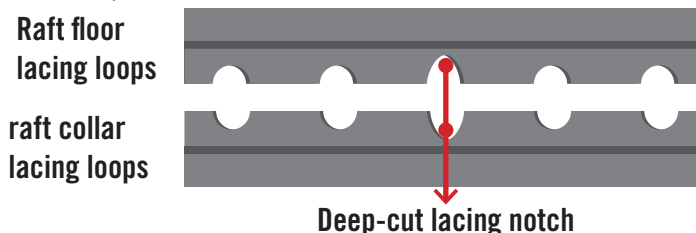


1 - Soapy water

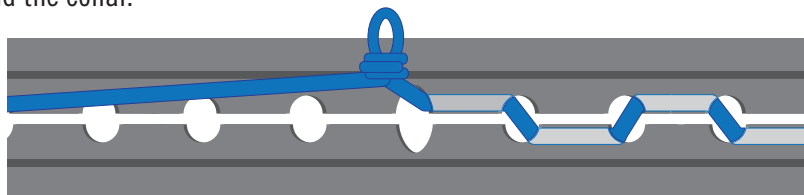


1 - Butane torch / lighter

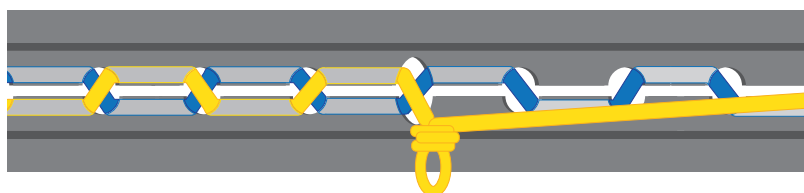
1. Flip the softly inflated raft collar upside-down.
2. Run three long cam straps all the way around the raft collar — one at the center, one at the bow, and one at the stern. This will create a cradle for the floor to rest on and helps keep the floor in position while you lace it in.
3. The bow of the raft collar has a built-in splash guard. The valve in the floor should be at the stern of the raft.
4. Place the floor in the cam strap cradle. Be sure the drain holes in the floor are facing up toward the bottom of the raft.
5. Heat the ends of the lacing ropes with a small torch or lighter to melt about 4"–5". Roll the ends of the rope between two pieces of cardboard to create a stiff "needle." This will make the rope ends ridged and easy to thread through the lacing loops.
6. Tie a slipknot in the center of each rope.
7. Soak the ropes (except the "needle" ends) in soapy water for about five minutes to help reduce friction.
8. Align the floor and the collar by the center deep-cut lacing notch found on both sides of the raft and floor pocket.



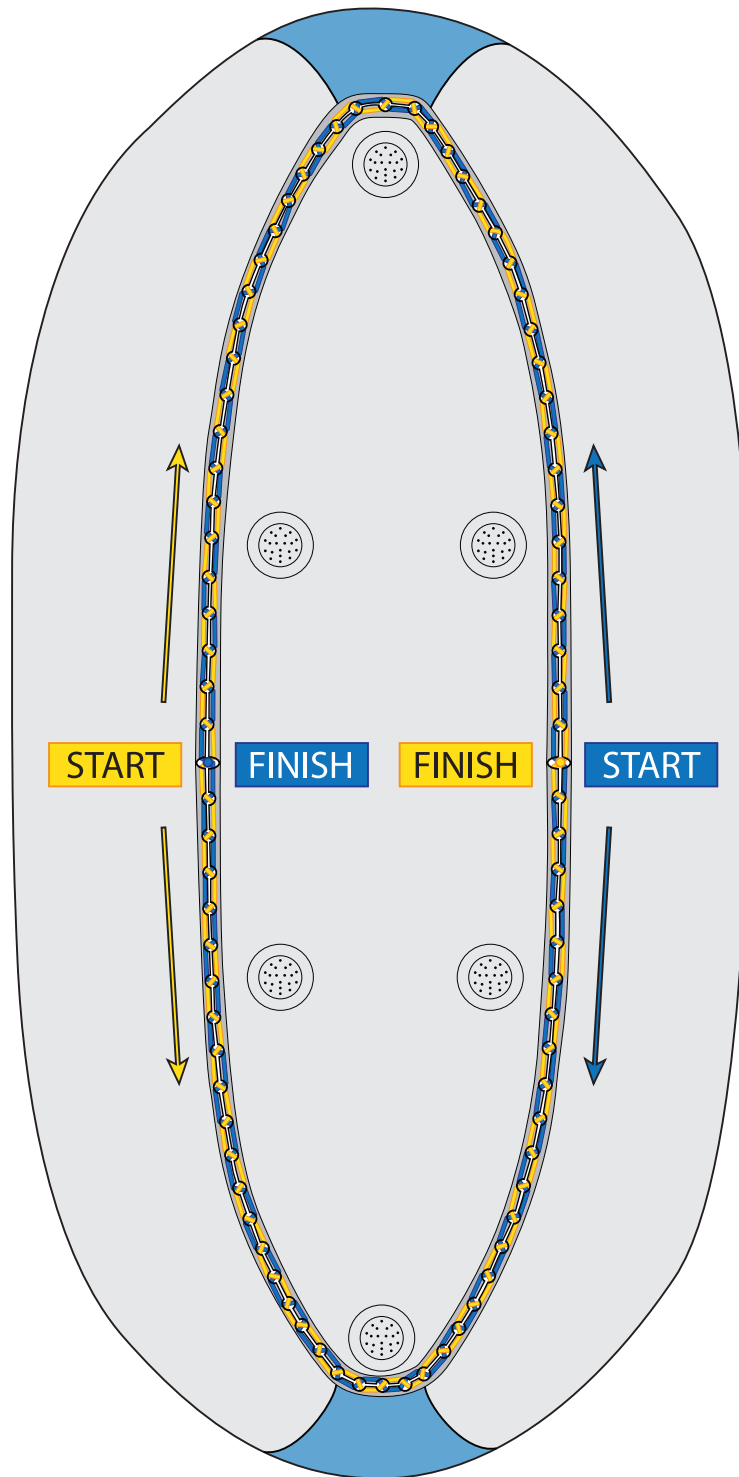
9. Start lacing rope #1 in this deep-cut center notch. The knot will prevent you from pulling all the rope through.
10. Alternate the rope from the collar to the floor; the pattern is every other lace loop in both the floor and the collar.



11. Every four or five loops, snug up the rope. When pulling the slack tight, PULL PARALLEL with the lace loops and never at an angle, because the friction from the rope can damage the loops.
12. Go half way around the raft to the other deep-cut lacing notch.
13. Go back to the start of rope #1 and untie the slipknot; continue the same pattern around the other side of the raft. Check that no loops were skipped.
14. With the first rope done, tie a series of square knots, trim the ends, and burn the ends together (being careful not to burn your raft). Tuck the knots under the lacing so the knots are on the inside of the floor and not exposed to the bottom of the raft.
15. With lacing rope #2, start on the side you finished lacing rope #1 and repeat steps 9–14, lacing through the opposite loops.



## Step 2 Continued: Raft Floor Installation Diagram



After the floor is laced in you can inflate the raft to full pressure. Full pressure is reached when you can depress about 1/4" from the top surface of the tube. If you hear a humming sound in the floor valve, it's the pressure release valve indicating the floor has reached maximum pressure (2.5 psi) and you can stop pumping.

## Step 3: Seat Assembly

### Items needed:



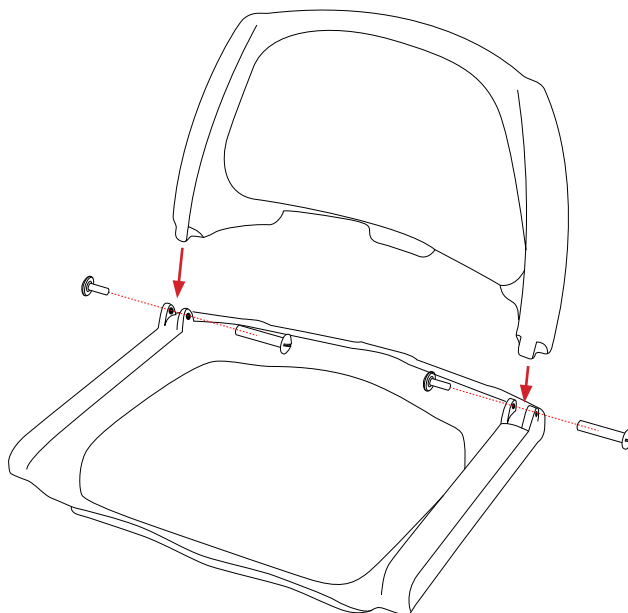
3 - Seat backs



2 - Seat bottoms with swivels  
1 - Regular seat bottom



Standard screwdriver



1. Attach the seat backs to the seat bottoms with the seat hinge pins.
2. Tighten the hinge pin screws with a flathead screwdriver.

## Step 4: Seat Mount Installation

### Items needed:



1 - Bow raised seat bar



1 - Cross bar



1 - Stern raised seat bar



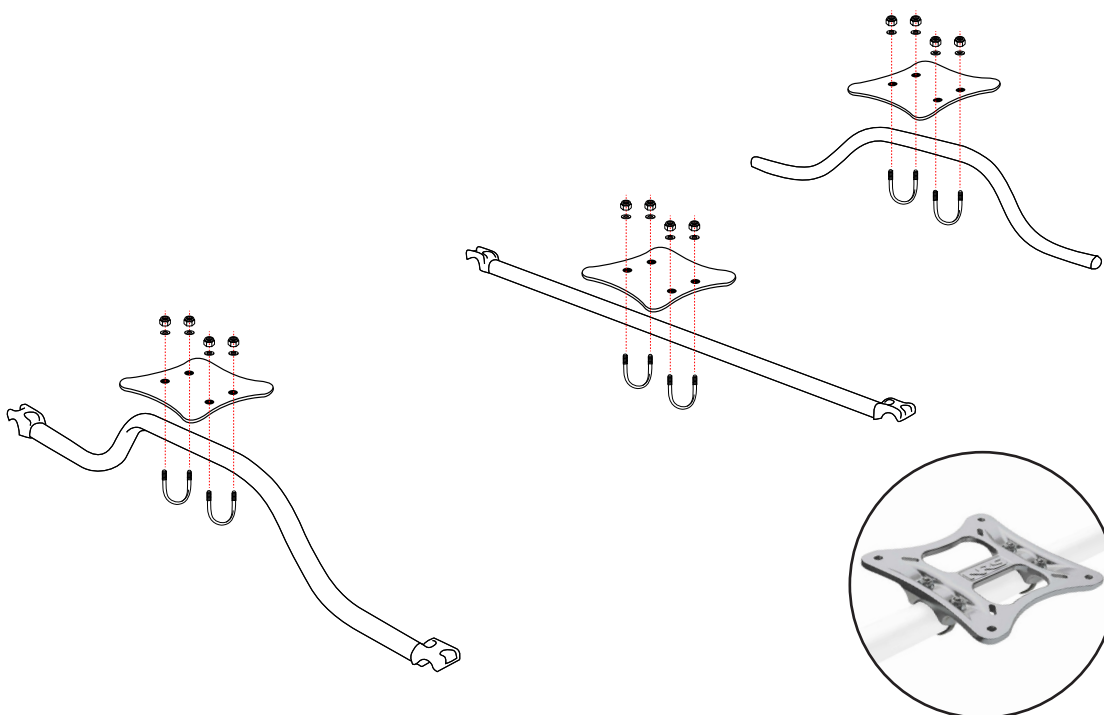
3 - Seat mounts



1 - NRS 1/2" ratchet wrench



6 - U-Bolt  
12 - Washers  
12 - Nylock Nuts



1. Attach the seat mounts to the raised seat bar, rowers cross bar, and the stern raised seat bar with 6 U-bolts, 12 washer, and 12 Nylock nuts.
2. Center and level the seat mounts, tighten the Nylock nuts with the ratchet wrench.

## Step 5: Main Frame Assembly

### Items needed:



2 - Side rails



2 - Cross bars



1 - Foot bar



2 - Stern seat bars



2 - Oar mounts



1 - Cross bar with seat mount



1 - Bow raised seat bar with seat mount



1 - Stern raised seat bar with seat mount



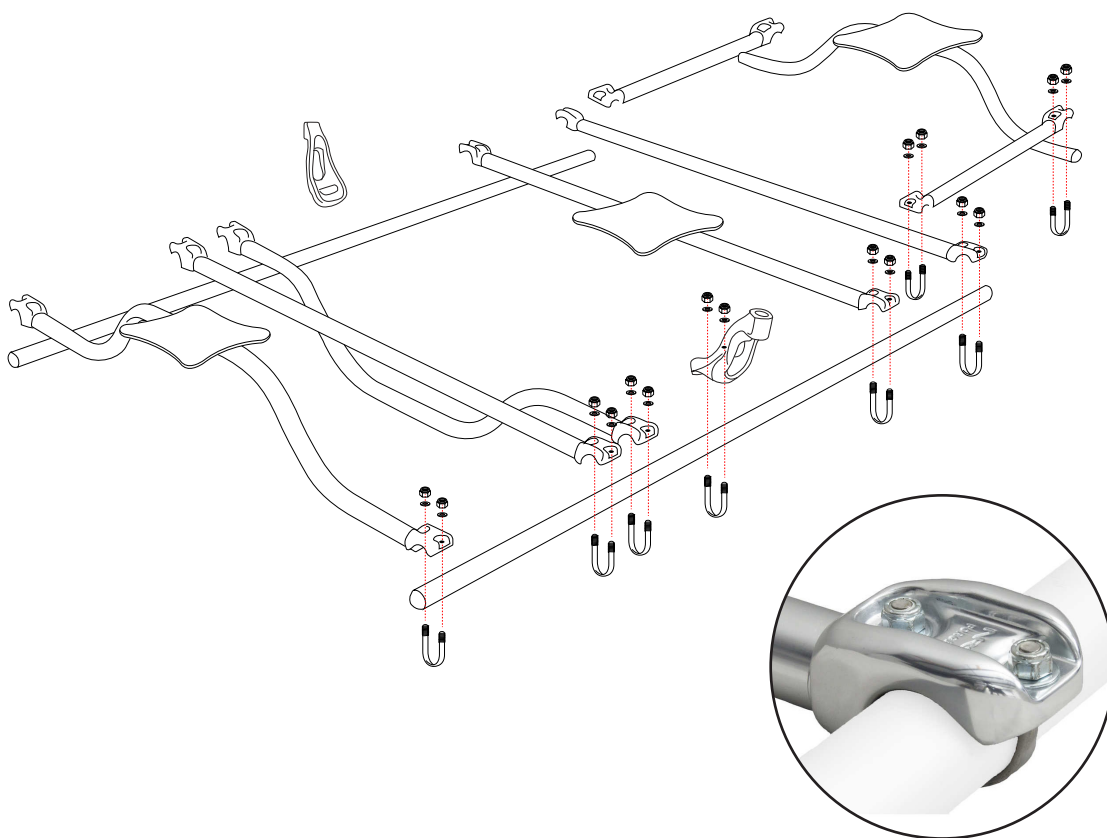
1 - NRS 1/2" ratchet wrench



16 - U-Bolt

32 - Washers

32 - Nylock Nuts



1. Assemble the main frame in the inflated PAC 1300 or 1400 as pictured above using 16 U-bolts, 32 washer, and 32 Nylock nuts.
2. Adjust the bars and oar stands as needed, tighten the Nylock nuts with the ratchet wrench.

## Step 6: Bow Casting Platform

### Items needed:



1 - Thigh hook



1 - Bow thigh hook bar



1 - Bow casting platform



2 - Bow platform hanger bars



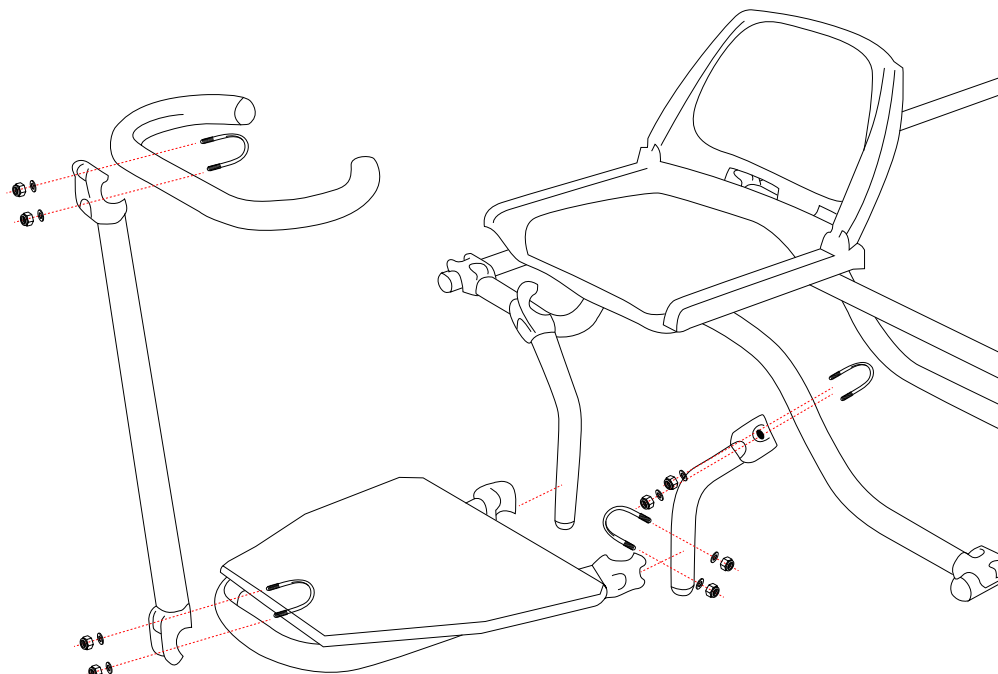
1 - NRS 1/2" ratchet wrench



6 - U-Bolt

12 - Washers

12 - Nylock Nuts



1. Assemble the bow casting platform and thigh hook to the bow seat bar as pictured above using 6 U-bolts, 12 washers, and 12 Nylock nuts.
2. Adjust the casting platform as needed, tighten the Nylock nuts with the ratchet wrench.

## Step 7: Stern Casting Platform

### Items needed:



1 - Thigh hook



1 - Stern thigh hook bar



1 - Stern casting platform



2 - Stern platform hanger bars



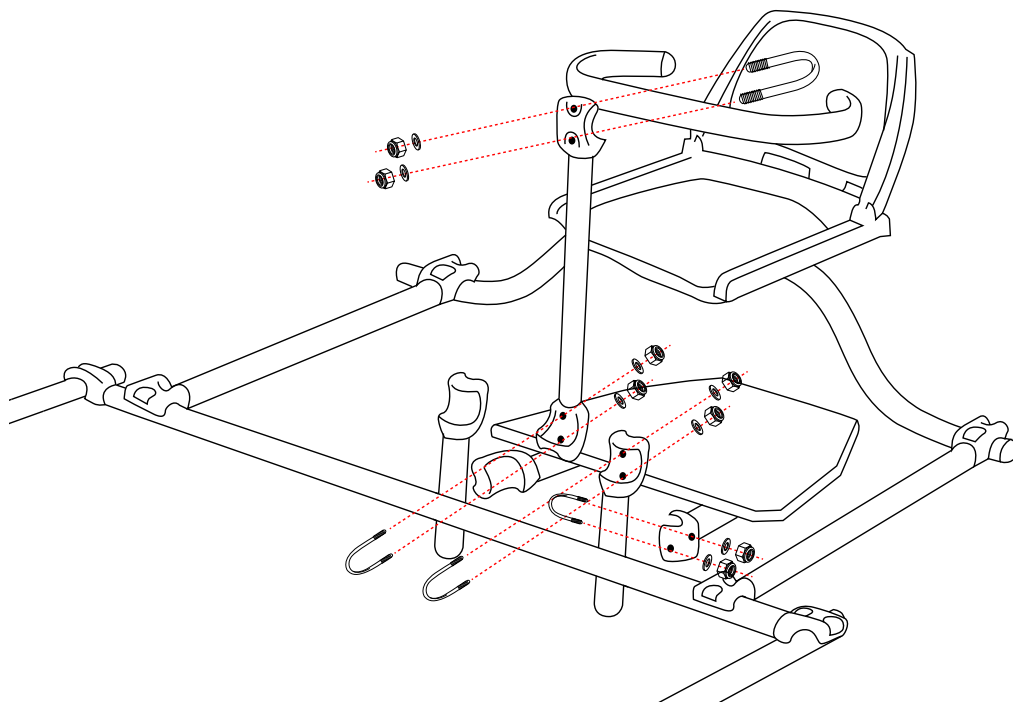
1 - NRS 1/2" ratchet wrench



6 - U-Bolt

12 - Washers

12 - Nylock Nuts



1. Assemble the stern casting platform and thigh hook to the back cross bar as pictured above using 6 U-bolts, 12 washers, and 12 Nylock nuts.
2. Adjust the casting platform as needed, tighten the Nylock nuts with the ratchet wrench.

## Step 8: Anchor System Assembly

### Items needed:



1 - Anchor control system  
with rope jam cleat



1 - Intermediate pulley



1 - Anchor mast



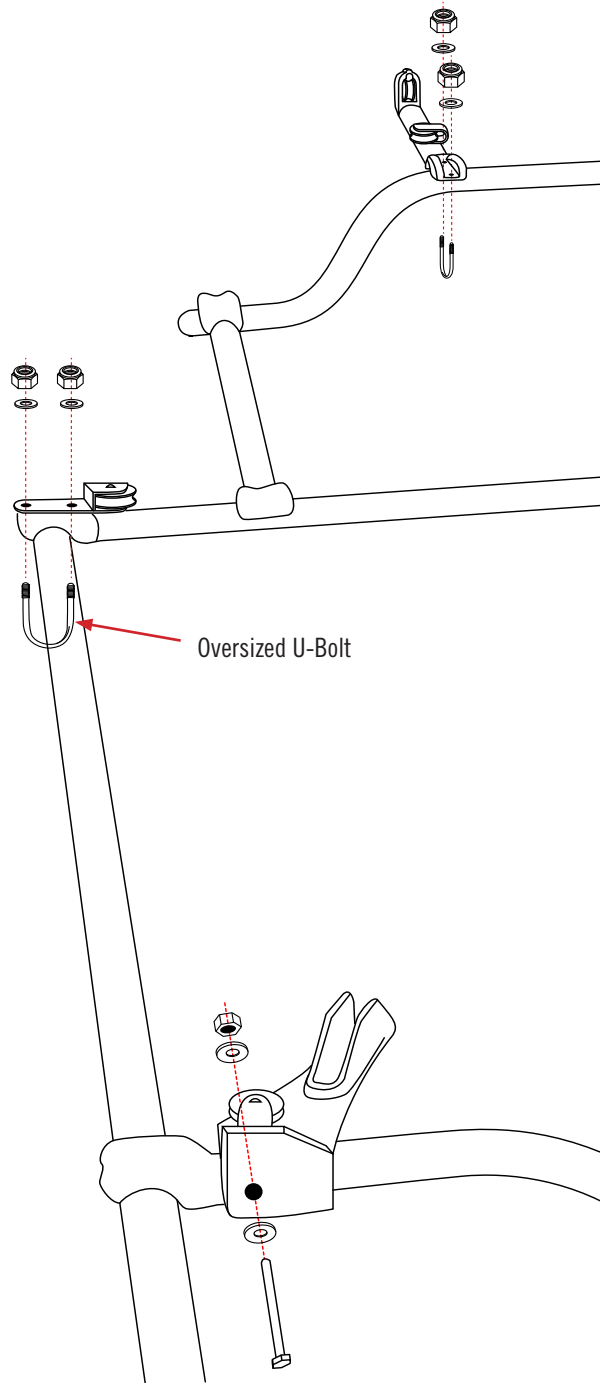
1 - 2.5" Bolt with nut  
And washers



1 - Oversized U-Bolt with nuts  
and washers



1 - U-Bolt with nuts  
and washers



1. Remove the bolt that secures the LoPro fitting on the right side of the foot bar. Place the anchor control system on top of the foot bar with the pulley facing the stern of the PAC 1300 or 1400. Line up the holes, insert the 2.5" bolt, with a washer on both ends, and tighten. This fastens the bracket in front and to the side of the rower.
2. Remove the U-bolt from the LoPro fitting on the right side of the rear cross bar. **Replace it with the oversized U-bolt.**
3. Place the intermediate pulley over both arms of the oversized U-bolt. Tighten the nuts.
4. Place the anchor mast to the right side of the stern seat bar and attach with the U-bolt.
5. Periodically check the tightness of all bolts.

## Step 9: Seats to Frame Installation

### Items needed:



2 - Swivel seats  
1 - Standard seat



8 - Carriage bolts



8 - Large washers



8 - 1/4" Nylock nuts



4 - Hex bolts



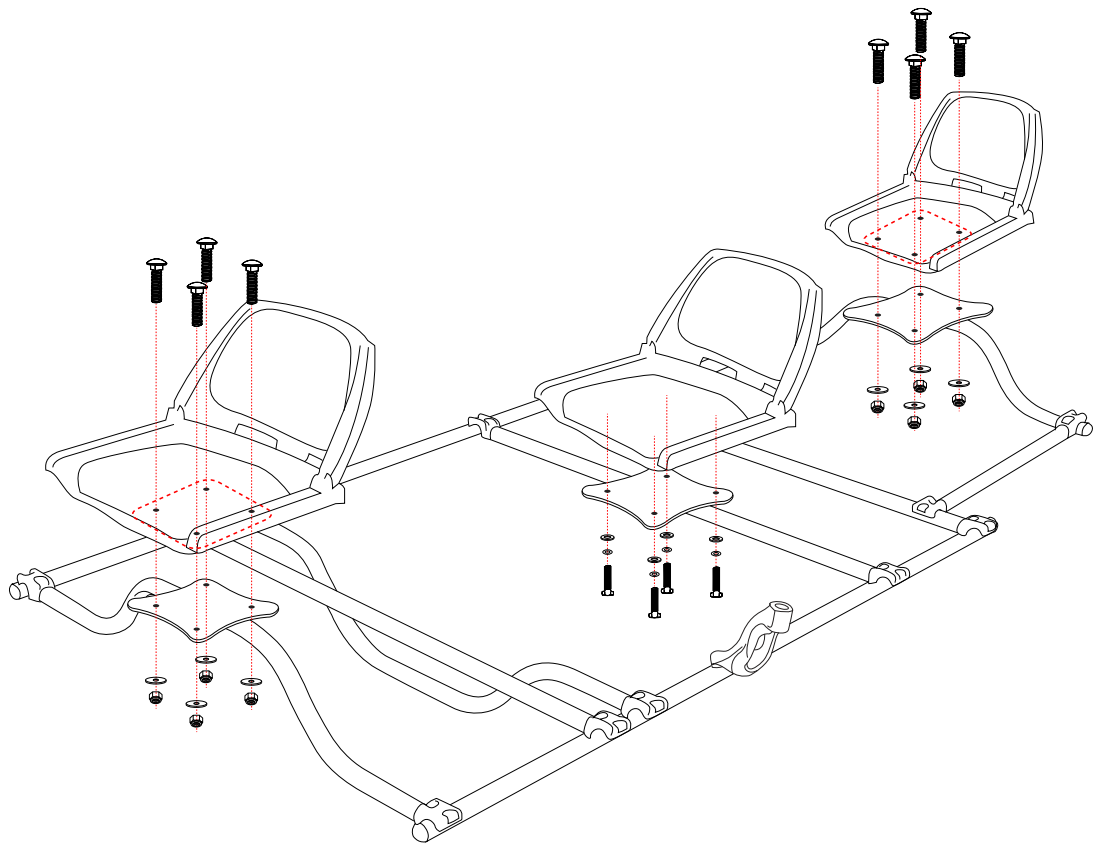
4 - 1/4" washers



4 - Locking washers



1 - 6mm wrench or socket  
1 - 1/4" wrench or socket



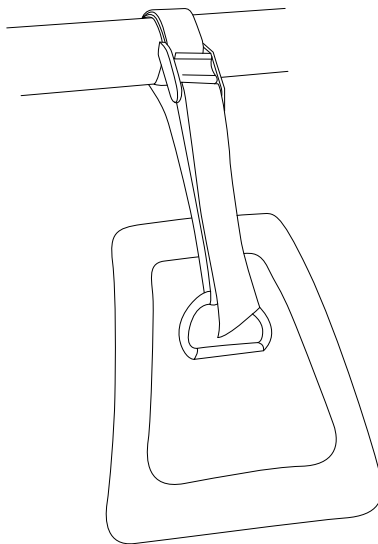
1. Attach the seats with swivels to the bow and stern seat mounts with the 1/4" wrench. The carriage bolts go down through the swivel and seat mount, and are locked into place with the large washers and 1/4" Nylock nuts.
2. Attach the seat without a swivel in the rowers position with the 6mm wrench. Put the lock washers and the 1/4" washers onto the hex bolts, go up through the seat mount and attach the bolts directly to the seat.
3. With the frame on the boat, adjust the bars for best personal fit and tighten the frame Nylock nuts with the ratchet wrench.

## Step 10: Strap The Frame to the PAC 1300/1400

*Items needed:*

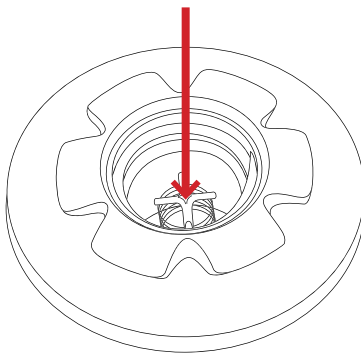


- 4 - 3' Cam straps
- 2 - 4' Cam straps
- 2 - 6' Cam straps



1. Strap the frame to side D-rings of the PAC 1300 or 1400 with 4, 3' cam straps.
2. Strap the stern seat bars to the stern D-rings with 2, 4' cam straps.
3. Strap the bow and stern casting platforms to the bow and stern D-rings by threading a strap through the hole in the platform. This helps support the weight of the angler.

## Deflation



Push down and turn the valve stem 1/4 turn. This positions the valve stem in the down or open position. Having the valve stem in the open position allows air to escape from the PAC 1300/1400.

## Storage Tips

- It is best to store your PAC 1300 or 1400 to soft pressure under a cover or car port that provides protection from environmental elements. This will help prevent weather and UV damage and will keep your AIREcells aligned.
- Allow your PAC 1300 or 1400 to air dry 24-48 hours before rolling for long term storage.
- Do not stack or load other gear or equipment on top of your rolled PAC 1300 or 1400.
- Be aware of folded and rolled corners of the PAC 1300 or 1400, these areas are susceptible to damage when being dragged or moved around on concrete or gravel.
- Keep away from heat sources such as open flames, furnaces, and water heaters.
- Store in a cool and dry place protected from UV light.
- Store your boat in a boat bag, heavy tarp, or cloth.
- Store inside or up off the ground to keep it away from mice.

## Transport

To avoid excessive wear and extend the life of the PAC 1300 or 1400 we recommend transporting this craft assembled on a trailer or deflated in a raft bag. Do not load other equipment, particularly heavy or sharp objects, on top of the craft. If you transport your boat in an open truck bed please make sure all sharp objects are removed because more boats are damaged in transport than on the water.



Valve caps should always be in place whenever transporting an inflated boat.

## Cleaning and Maintenance

Your inflatable boat is constructed with high quality materials and superior workmanship however, as with all outdoor equipment proper cleaning and maintenance will extend the use of the product and allow it to perform better. Most damaging to your inflatable boat are extended UV exposure, insect repellents, mold and mildew.

To keep your boat performing at its best, please following these simple instructions.

- Do not set your boat on sharp objects.
- Do not over inflate your boat.
- Keep the zippers clean.
- Clean the boat with soap and water.
- Allow the boat to dry before rolling.



Scan QR code for cleaning video

## Basic Troubleshooting

Valve does not retain air when pump is removed.

- Clear any debris that might be preventing the valve from sealing. This can be accomplished by either pumping quick bursts of air into the valve or removing the core valve assembly and cleaning the valve with a cotton swab and denatured alcohol.
- Tighten valve with the valve wrench if necessary.

PAC 1300 or 1400 becomes soft after the inflation process.

- Top off air pressure in the cold water to counter thermal contraction.
- Determine which air chamber is soft. Make sure the valve is functioning correctly, with no signs of leaking.
- Find the hole in the AIREcell and patch with the Tear Aid patch.

Zipper is difficult to operate.

- Use a combination of soap, water and an old toothbrush to clean the zipper.

Tear Aid patch does not stick to the AIREcell.

- Make sure the area to be patched is dry and clean. Use the alcohol pads to prep the area.

## Repair Kit Items

Roll of fabric with PVC, AIREcell material, and floor AIREcell material. - These can be used for stitched or glue repairs. Extra pieces of PVC can also be used to pad areas of a raft on a trailer.

Alcohol prep. pads - For cleaning the surface of the PVC or AIREcell material before a patch.

Piece of sand-paper - Used to buff PVC material or a Tear-Aid or glue patch.

Vinyl tube valve adapter - This adapter can be used on almost any pump, with any valve found on the river.

Leafield valve adapter - Can be used with most pumps with the vinyl tube valve adapter. This adapter locks into the valves of your boat.

Leafield valve wrench - Used to tighten or loosen the inflation valve and pressure release valve of your boat.

Repair needle and thread - Used to stitch tears in the PVC outer shell of the PAC 1300 or 1400

5/32" hex key - Used to tighten or loosen the bolts on the handles or zipper bridge.

Replacement split rings - Extra split rings to keep the outer shell zipper cars locked together.

Type A Tear-Aid patches - Permanent patches for small AIREcell punctures.

Type A Tear-Aid roll - Can be used as a temporary patch to large tears in the PVC shell or AIREcell.

#8 zipper car - Used to unzip the internal bulkhead zipper.

Heat shrink tubing - Used to bind the bulkhead zipper tails together.

For long trips, we recommend purchasing Stabond glue and an extra AIREcell.

## Type A Adhesive Patch Repair

### *Items Needed:*

Rag

Type A adhesive patch

Alcohol prep pad

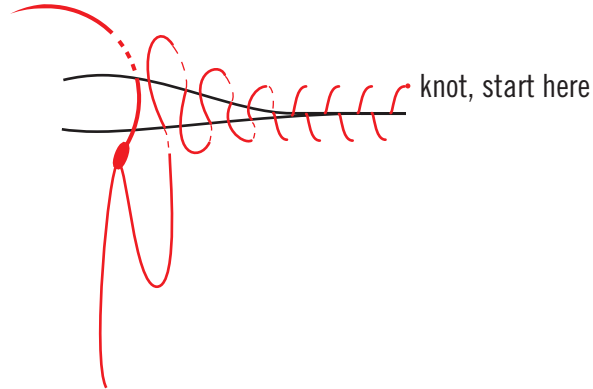
Tear Aid instruction sheet

1. For most repairs, the airecell does not need to be removed completely.
2. Locate the hole in the boat and access that area of the airecell and outer skin by opening the zipper.
3. Using a rag, dry the area to be worked on.
4. Clean the area with alcohol prep pad and let the area air dry.
5. Peel backing paper off Type A adhesive patch and apply patch over punctured area. (See Tear Aid instruction sheet for more details.)
6. Press and rub patch so that the patch seals completely, without bubbles.

## Baseball Stitch Repair (For Outer Skin Repair)

### Items Needed:

- Repair needle
- Repair thread



1. Use the baseball stitch to repair cuts on the outer skin.
2. Each stitch for the baseball stitch starts at the BACK of the PVC and comes through to the FRONT of the PVC.

## Extensive Repairs

If you have a major rip or tear in your boat that is beyond your abilities to repair, please contact Outcast at 844-556-5730 for a Return Authorization (RA) number. Please put a brief note with your contact information and a detailed description of the repairs necessary inside the box and ship the package to the address below with the RA number clearly written on the outside of the box. Please ship the boat with a service that provides a tracking number.

## Warranty

### 10 YEAR NO FAULT WARRANTY

**What this Warranty Covers:** The Ten (10) year no fault warranty covers retail purchases on all AIRE branded rafts, catarafts and kayaks against defects in materials, workmanship and user damage. This warranty covers the tubes, fabric, D-ring patches, AIREcells, valves and zippers to be functional and water worthy with the following stipulations:

- This warranty can be void if the boat is structurally altered, used commercially or is subject to stress beyond the physical limits of the fabric and/or accessories.
- This warranty does not cover cosmetic wear, abrasion, excessive UV damage, abnormal abuse, neglect and/or inappropriate storage.

**The Period of Coverage:** The boat is covered from the original purchase date for a period of ten years. When original proof of purchase is not available or if a warranty registration was never submitted, the date of manufacturing will be used.



Outcast Sporting Gear ~ 844-243-2473 ~ 2021 E Wilson Lane. Meridian, ID 83642 ~ [info@outcastboats.com](mailto:info@outcastboats.com)